

**Biosketches and Memories**

Submitted by

Former Faculty and Alumni  
of the Department of Psychology  
at Kent State University

## Table of Contents

### Former Faculty:

Laura Bogart .....	3
Anne Copeland.....	4
D. James Dooling.....	5
Bruce D. Downing .....	6
Alan Fruzzetti.....	7
Clyde Hendrick.....	8
Ken Hoving.....	9
Gordon C. Nagayama Hall .....	10
Jeanette Reuter .....	11
Stu Taylor.....	12
David R. Thomas.....	13

### Ph.D. Alumni:

Audie A. Atienza .....	14
Richard Bloom .....	15
Susan Buchwalter .....	16
Vera Buk-Bjerre .....	17
Rebecca P. Cameron .....	18
Fred Freeman .....	19
Paula Hartman-Stein .....	20
Gary Hawk – In Memoriam.....	21
Sue Hetrick .....	22
Norman Jentner .....	23
Robert K. Klepac .....	24
Robert Kornhaber .....	25
Kenneth Leonard .....	26
Barry Lubetkin .....	27
John M. Marazita.....	28
Diane Moran .....	29
Thomas D. Parker.....	30
William F. Prokasy .....	31
J. LeBron Rankins.....	32
Alexander Rich.....	33
Jennifer L. Sanftner.....	34
Judith Scheman.....	35
Steve Schwartz .....	36
Kathleen Powers Stafford .....	37
Lyn Stein .....	38
James W. Stoops.....	39
Rodney Timbrook.....	40

### Undergraduate Alumni:

Amanda Flowers.....	41
Ingeborg Hrabowy .....	42

Former Faculty

**Laura Bogart**

I don't think anyone in the department needs updating about me, since I'm still in contact with people and working with students (and my brother's there!). However, let everyone know that I miss them and the great collegial environment in the department. I'm very glad I got to spend time at Kent.

Laura Bogart is a behavioral scientist at RAND in Santa Monica, CA.

## Former Faculty

### **Anne Copeland**

It's hard for me to believe it's been 25 years since I left Kent, but it's true. Here's the quick summary:

From Kent, I moved to Boston University's Psychology Department, where I taught courses, from 1979 to 1997, in Developmental Disabilities, Child Development, Developmental Research Methods, and Family Research Methods. My interests evolved this way: developmental disabilities then pediatric psychology then family psychology then culture and ethnicity. This last step was facilitated by the 16 months I spent in London overseeing BU's study abroad program.



I met Jim Womack in 1983 through mutual friends and married him in 1984. Jim was then at MIT doing studies of industrial processes. He and a colleague have written several books on "lean production," about the methods Toyota developed. A new book – asking what would happen if the same attention to efficiency were applied to consumer activities (health care, tech support, retail) – is due out this fall. Jim founded his own institute, the Lean Enterprise Institute, in 1997. Our first daughter, Carrie, was born in 1986, shortly after I got tenure at BU; she's finishing her freshman year at Bryn Mawr College where she's loving her math and science courses. Our second daughter, Katherine, was born in London in 1989, and is finishing her sophomore year in high school.

So, the move to Boston was wonderful for me personally. But I was increasingly unhappy at BU, and (sorry, guys) with academic life itself. My experience working in London made me want to find a way to apply my research and new interests in intercultural issues, and I wanted to do it outside the university. So I downgraded to "Adjunct Associate Professor" at BU (still advising grad students) and founded The Interchange Institute ([www.interchangeinstitute.org](http://www.interchangeinstitute.org)), a non-profit organization, in 1997. We study and support people who move from one country to another. We do publications (including several books and a monthly newsletter I've done now for 10 years, for newcomers to the US), research (including funded research from relocation companies), and corporate training and training-of trainers.

I look back at my two years at KSU with fondness – you were kind and supportive to me, even while I – a young, single woman with rather flaky interests – was looking for a place to put down roots. I'd love to hear from anyone I knew back then, and compare stories.

## Former Faculty

### **D. James Dooling**

- Joined the KSU Faculty in September, 1969 with a Ph.D. from SUNY-Buffalo.
- Taught undergraduate and graduate courses in Intro Psych, Statistics, Experimental Design, Cognitive Psychology & Psycholinguistics.
- Published various research papers on memory and speech perception.
- August 1976: Joined AT&T Bell Labs, Holmdel NJ. Did human factors engineering of various business telephone systems.
- August 1981: Became a Technical Manager. Managed groups that worked on User Interfaces, Data Networks Market Research & ISDN Standards.
- August 1988: Became a Division Manager. Managed departments that worked on Quality Process Improvement, Applied Technical Research & User Centered Design.
- June 1998: Retired from AT&T Labs.
- June 1998 – Present. Consultant for Millennium Services. Most of the work has been at AT&T and Lucent. Major areas of work have been Design of Voice Response Systems and Software Process Improvement.
- Still married to Carol A. Dooling, who works at the Red Bank Public Library. Our 40<sup>th</sup> wedding anniversary is coming up in August.
- Our daughter Jessica is now 33 and graduates next month from the Environmental Sciences program at Rutgers.



Former Faculty

**Bruce D. Downing**

**The Tracking of Unguided Professional Behaviors**

1. I left KSU in 1978 to accept a position with SCT Corporation as an Academic Computing Specialist. My first assignment was to develop and implement a new structure for educational computing at Cuyahoga Community College. These efforts led to a model of academic computer facilities planning. I was promoted to a corporate management position in 1980 and moved to Media, PA. Through 1981 I consulted with about 30 colleges and universities on setting up similar facilities.
2. In 1981 I joined Commodore Computers as the Director of Industry Marketing with an emphasis on education. I helped introduce the Commodore 64 in education and accounted for about 60% of the company revenue.
3. In 1982 I was part of a start up team that developed a new computer franchising company, Intelligent Electronics. My role was to develop the sales and technical support programs for the franchisees. We grew from 0 to \$200 million by 1987 and went public. We then started acquiring other companies and IE eventually grew to about \$3.5 Billion in sales. However, I left in 1989 to start another company. (IE was too big and had too many managers from acquired companies.)
4. After 1992 I started 4 other IT related companies that were mostly (although some marginally) successful.
5. Two years ago I started my current company, P.I.T. Services, Inc. (DBA Provisory Services). We are primarily consultants assisting with the management of IT departments and offering services in information security, records management and systems for legal and regulatory compliance (such as Sarbanes-Oxley and HIPPA).
6. Kate (formerly Kate Condron) continues to put up with me and we are trying to decide when to retire.

## Former Faculty

### **Alan Fruzzetti**

I was on the faculty at KSU from 1992-1994. Since that time I have been at the University of Nevada in Reno.

Alan E. Fruzzetti, Ph.D., is Associate Professor of Psychology and Director of the Dialectical Behavior Therapy and Research Program at the University of Nevada in Reno, Nevada. He received his B.A. from Brown University and M.S. & Ph.D. from the University of Washington in Seattle.



Dr. Fruzzetti's research focuses on models of major psychopathology/severe behavior problems (e.g., borderline personality disorder, partner other family violence, chronic depression) in the context of couples and families, and the development and evaluation of effective treatments for these problems. In particular, he focuses on the further development, evaluation and training of Dialectical Behavior Therapy (DBT) with individuals, couples and families for chronic or severe individual and/or family distress. He also maintains an active, generally pro bono, psychotherapy and family therapy practice.

Dr. Fruzzetti is Research Director and Member of the Board of Directors of the National Educational Alliance for Borderline Personality Disorder. He has provided extensive training in the United States, Europe, and Australia in Dialectical Behavior Therapy with individuals, couples, and families. He has authored or co-authored dozens of articles and book chapters on these and related topics.

## Former Faculty

### **Clyde Hendrick**

I was a faculty member at Kent State during the years 1968-1977. There were eight of us hired the year I came. Time takes its toll. I saw only 6 names of people who were there during the years I was there. I was especially saddened to learn of the passing of Roy Lilly. He was a great guy, a good chair, and an all round wonderful human being.

In 1977, I became Chairman of Psychology at the University of Miami, Coral Gables, Florida. I served in that role until 1984 when we moved to Lubbock, Texas. I assumed the role of Dean of the Graduate School at Texas Tech University, a position I held until 1995. By then I had more than enough of administration and was happy to become a “mere” faculty member once again. It did take a while to get used to NOT giving orders to everyone around me! I have now been a faculty member for a decade, and still going strong. In 1996 I became a Paul Whitfield Horn Professor of Psychology, “the highest honor Texas Tech can bestow on a faculty member.” The professorship is named after the first president of Texas Tech. Actually, it is a real honor; there are about 30 of us on campus, and it pays well.

So, I have had a full and blessed career, and am still going strong. I am, and have always been, grateful to Kent State for the big start it gave me in my academic career. I spend a special day of remembrance of Kent State every May 4.

## Former Faculty

### **Ken Hoving**

I joined the Department of Psychology at KSU in 1963 and left to become the Graduate Dean at Kent State in 1976. I left Kent State in 1979 to become the Graduate Dean and VP for Research at the University of Oklahoma. I served both the Health Sciences Campus in Oklahoma City and the main campus in Norma in those capacities until about 1991 when I left to become the interim Executive Vice Chancellor for Academic Affairs for the Oklahoma State Board of Regents. During my tenure as Dean and VP I was privileged to serve on and chair the Graduate Record Exam Board, to serve on as Vice Chair of the Test of English as a Second Language, the Board of the Council of Graduate Schools, as member and chair of the Council on Research Policy and Graduate Education for NASULGC, the Executive Deans Committee of the African American Institute, and as a member and chair of the American Association of Western Universities.



I left the State Regents position after one year for a wonderful year in Washington D.C. where I was a Senior Consultant to the American Association of State Colleges and Universities. Adele and I lived on the 21<sup>st</sup> floor of an apartment in Crystal City overlooking the Capital.

I came back to the University of Oklahoma's Psychology Department as a faculty member in 1994 and reluctantly became chair in 1995. I agreed to serve two years and indicated I would serve an additional year only if the faculty were unanimous in requesting I continue. I felt very safe as getting faculty, as you all know, to all agree is virtually impossible. They did the unheard of and I served an additional year.

I retired in 1998 and began to sculpt, something I had always wanted to do. It appears that others have found the work pleasing as I have several bronzes of former dignitaries located at the University, and other works in private homes. Adele and I have a small sailboat in Puget Sound and sail for six or more weeks in the summer and a time share on a barge in Europe on which we spend about two weeks a year.

Life is great at this point and I would love to have contact with any former students who remember me. My best to all of you and I wish the Department many more great years.

## Former Faculty

### **Gordon C. Nagayama Hall**

Gordon C. Nagayama Hall was a faculty member in Psychology from 1988-98. He was a faculty member in Psychology at Penn State University from 1998-2001 and then became a faculty member in Psychology at the University of Oregon in 2001. His research is on the cultural context of psychopathology, particularly sexual aggression. He is Editor of Cultural Diversity and Ethnic Minority Psychology and Associate Editor of the Journal of Consulting and Clinical Psychology.

Gordon celebrated his 25th wedding anniversary with Jeanne in 2004. His children are Jackie (12 years old), Kashi (9), and Koko (8).

#### **Memories:**

Gordon Nagayama Hall has fond memories of Kent State, including refreshing Richard Hirschman's memory, lunches in the Riccio-Hirschman suite, faculty-student softball games, 4th of July parties at the Treichlers', Halloween costume parties, singing phone answering machine messages, and working with great students.



## Former Faculty

### **Jeanette Reuter**

Jeanette Reuter retired from Kent State in 1988 after 24 years as a faculty member. During that time she received a KSU Alumni Award as a Distinguished Teacher (1973) and was awarded a Kent State President's Medal (1987).

She also received a commendation from the 117<sup>th</sup> General Assembly of Ohio as an Outstanding Educator (1987). Along with her faculty service she was selected as a member of APA's Technical Consulting Group that assisted Harvard University School of Public Health in establishing the Resource Based, Relative Values Scale (RBRVS) for Psychological Assessment and Psychotherapy Services for the U.S. Health Care Financing Administration (1992-93).

After retirement, she was awarded a commendation from Ohio Governor Richard Celeste for Outstanding Contributions to the Development of the Statewide Early Intervention System (1989) and a Lifetime Achievement Award from Ohio Women in Psychology (1990). In 1999, she was honored as the Featured Lecturer at Kent State University's 2<sup>nd</sup> Annual Glenn Frank Memorial Lecture.

After her faculty service, Jeanette remained busy as President of Kent Developmental Metrics, Inc., a private research and clinical practice organization specializing in early intervention and work with children and adults diagnosed with developmental disabilities. Their primary focus of research has involved continued psychometric development of the KIDS (Kent Inventory of Developmental Skills; Reuter & Gruber, 2000), a test developed by Reuter and Katoff to facilitate measurement of early behavioral development.

Through the efforts of Jeanette Reuter and her husband and business partner, Louis Reuter, the KIDS has become widely accepted as an international early intervention assessment instrument. Complete normative studies, with standardized scoring and reliability and validity checks, have been published in six European countries: The Netherlands, The Czech Republic, Spain, Russia, Germany, and Hungary. In March 2005, representatives from the SATR Institute and UNICEF completed a standardization of the Kazakh version of the KIDS through the support of UNICEF. In addition, the KIDS has been used and translated in the following countries: Croatia, Sweden, China, Vietnam, Malta, Zimbabwe (in English, Shona, and Ndebele languages) and Tanzania (in Swahili). (1982-2003)

Currently retired and living in Hudson, OH, Dr. Reuter remains active in developmental assessment research and continues her international work with the KIDS. She and Louis have established an endowment at Kent State to fund the KIDS Project with the purpose of developing a web-based data archive that stores data from research on early childhood development and promoting international collaborative efforts at Kent State. For additional information visit the KIDS site (in progress) at <http://kidsweb.sociology.kent.edu>

In addition, Jeanette and Louis Reuter have provided support and funding for a small and unique AIDS education program in Zimbabwe that disseminates information on HIV to visually impaired adolescents and adults.

## Former Faculty

### **Stu Taylor**

I'm still playing tennis; lot's of tennis! I'm the captain of a USTA senior team, play on a USTA super senior team and play a lot of interclub tennis on and off the island. Oh yeah, I also swim a lot, in my swimming pool and in the ocean. I forgot! In my spare time I golf, kayak, read a lot and travel. Barb and I recently went to the Society Islands (Tahiti, Bora Bora, Morea, etc.), Italy, Spain, France, Monte Carlo, Majorca, Ashville, NC to visit my two grandsons and Irvine, CA to visit another grandson. We will be cruising the Mediterranean this May and June and staying a few days in Venice.

Retirement is exhausting. I may have to go back to teaching (at the New River campus of the University of South Carolina, which is twenty minutes from my home in Hilton Head) to get some rest. On second thought, Nah!

Former Faculty

**David R. Thomas**

I started my academic career at Kent State University in 1958 and I left to accept a position at the University of Colorado in 1967. In 1968 I was promoted to the rank of Professor and for seven or eight years thereafter I was the Director of the Ph.D. program in Experimental Psychology. In 1981-1982 I served as President of the Rocky Mountain Psychological Association.

At Colorado I taught Graduate and Undergraduate courses in Learning and Undergraduate courses in Research Methods. For some years I was the Director of the Undergraduate Honors Program for the department.

Throughout my academic career my research was in the area of Stimulus control, broadly conceived. Most of this work used pigeons as subjects and operant conditioning methodology. Most of the rest of it used human subjects (sophomores) and explored the implications of Adaptation Level Theory in human judgment as reflected in tests of recognition memory. My research led to over one hundred publications in refereed journals, and I served as a Consulting Editor of the Journal of Experimental Psychology and the Journal of Comparative and Physiological Psychology, as well as an ad hoc reviewer for several other journals and grant agencies.

I retired from the University of Colorado in 1996 and have never looked back. My wife, Doris, and I now live in Sun City West, Arizona (near Phoenix), a community with seven golf courses, and we play them all. We spend our summers in Park City, Utah. On days when I don't play golf, I can usually be found waist deep in cold running water with a fly rod in my right hand. Life has treated us kindly, for which we are most grateful.

## Ph.D. Alumni

### **Audie A. Atienza**

Audie Atienza is a Behavioral Scientist/Program Director at the National Cancer Institute (NCI), Division of Cancer Control and Population Sciences, Behavioral Research Program, Health Promotion Research Branch. He received his bachelor's degree from the University of California at San Diego in 1991 and obtained his doctorate in Clinical Psychology from Kent State University in 1998. He completed a clinical psychology internship as a Behavioral Medicine Specialist (with Neuropsychology and Family Therapy rotations) at the Palo Alto Veterans Administration Health Care System.

Prior to coming to the NCI, Dr. Atienza completed a Post-Doctoral Fellowship at the Stanford University School of Medicine, Stanford Prevention Research Center (formerly the Center for Research in Disease Prevention). He was selected as a Fellow to the 25th Ten-Day Seminar on the Epidemiology and Prevention of Cardiovascular Disease (AHA 1999), the Summer Training Institute on the Design and Conduct of Randomized Clinical Trials Involving Behavioral Interventions (OBSSR/NIH 2001), and the Physical Activity and Public Health Course (CDC, 2003). At NCI, Dr. Atienza has spearheaded research endeavors in eHealth and Real-Time Data Capture research, including serving as chair/organizer of national conferences: “The Science of Real-Time Data Capture conference (Sept 2003, Charleston, SC), “Capturing Physical Activity and Diet in Real-Time” expert panel working group (June 2004, Bethesda, MD), and “Critical Issues in eHealth Research” national conference (June 2005, Bethesda, MD).

His research interests include health promotion/disease prevention, ethnic minority health, health disparities, psychosocial aspects of health, health and aging, community health, and real-time data capture in health research using innovative technology.

## Ph.D. Alumni

### **Richard Bloom**

Dr. Richard W. Bloom is Dean, College of Arts and Sciences; Professor of Political and Clinical Psychology; and Director, Terrorism, Intelligence, and Security Studies, at Embry-Riddle Aeronautical University, Prescott, AZ. He is a Past-President of the Military Psychology Division of the American Psychological Association; Fellow of the Society of Personality Assessment, the Society of Air Force Clinical Psychologists, the Inter-University Seminar on Armed Forces and Society; Diplomate of the American Board of Professional Psychology (clinical); and member of the Association of Former Intelligence Officers. He carries out policy analysis and reviews applied research on aviation security threat assessment; terrorism; intelligence collection and analysis; covert action, counterintelligence, and personnel security; and the psychology of information warfare. He also teaches courses on philosophical psychology and theoretical psychology and specializes in critiques of post-modernism and post-structuralism in the contexts of political philosophy, the sociology of philosophy, biography, and autobiography.

#### **Memories:**

I remember how grateful I was to be accepted into the doctoral program, to receive financial support, to graduate without being in debt, and to attend the classes of Professors Lilly and Graham.

## Ph.D. Alumni

### **Susan Buchwalter**

Susan D. Buchwalter, Ph.D. has been the President/Chief Executive Officer of The Counseling Center of Wayne and Holmes Counties since 1981. The Counseling Center, which is located in Wooster, Ohio, provides prevention, rehabilitation, and treatment services to children and adults with behavioral health disorders.



Dr. Buchwalter has served on the Board of Trustees of the Mental Health Corporations of American (MHCA) for 15 years and is the current Chair. She also serves as President of the Board of the Ohio Council of Behavioral Healthcare Providers and is a member of the Ohio Psychological Association, the American Psychological Association, and the National Register of Health Service Providers in Psychology. She is an appointed representative to the board of the Mental Health Risk Retention Group, a captive insurance company providing professional liability insurance to behavioral health care organizations. In the past, she served as a regional representative on the board of the National Council of Community Behavioral Healthcare and was an appointed member of the Ohio Commission on Mental Health. Dr. Buchwalter is also the President/CEO of The SourceOne Group, Inc., a private behavioral health company located in Wooster, Ohio.

Dr. Buchwalter has a doctoral degree in clinical psychology from Kent State University; and prior to being named as CEO at The Counseling Center was employed as a staff psychologist and supervisor at the same organization. She has also worked in private practice, served as a consulting psychologist at a psychiatric hospital, and acted as court evaluator for the juvenile court.

## Ph.D. Alumni

### **Vera Buk-Bjerre**

Since earning my Ph.D. in 1984, I've been working at Child Guidance/Family Solutions. Yes, 20 years, but only-part time for the past 13 years. We see adults now as well as children. I also have a private practice in Kent, Ohio, where I live. Beginning last year, I have also been teaching a couple of on-line courses in psychology at Myers University.

I quit smoking about 17 years ago and started riding a bike to get rid of some of that nervous energy. I wound up going on the Great Ohio Bicycle Adventure in 1990 and I met my husband, Doug Bjerre. We married in 1991 and, in 1992, we had a son. His name is Kevin and he'll soon be 13 years old.



#### **Memories:**

One of my favorite memories is of the first day of graduate school. It was all downhill after that.

## Ph.D. Alumni

### **Rebecca P. Cameron**

Rebecca Cameron is a licensed psychologist in California and an Assistant Professor in the Psychology Department at California State University, Sacramento, where she teaches undergraduate- and master's-level students and conducts research on coping, roles, and relationships. She is coauthor of over 20 journal articles and book chapters and dozens of conference presentations on stress and coping, health and psychological functioning, and psychological interventions. Currently, her service involvement includes acting as faculty advisor to Psi Chi, chairing the Clinical Committee, providing *pro bono* clinical services through the Psychological Counseling Services, and serving on the Board of Directors of Asian Pacific Community Counseling.



Rebecca received her Ph.D. in Clinical Psychology in 1997. She worked with Stevan Hobfoll while at Kent State, conducting research on stress, social support, and coping. She completed her clinical internship focusing on behavioral medicine, PTSD, and family therapy at the Palo Alto VA Health Care System, followed by an NIMH Postdoctoral Fellowship in Behavioral Medicine in the Department of Psychiatry at Stanford University. There she worked with C. Barr Taylor, MD, collaborating on research evaluating treatments for anxiety and depression among psychiatric and primary care patients. Following postdoc, she continued to collaborate with Dr. Taylor on smoking intervention research while gaining teaching experience in a temporary appointment as an Assistant Professor at the University of San Francisco.

Rebecca's husband, Christopher, works as an executive in health care, currently with Health Net Federal Services. Rebecca and Christopher have two lively and engaging daughters, Catherine, age 7, and Jacqueline, age 2.

## Ph.D. Alumni

### **Fred Freeman**

I received my masters degree from Kent State in 1967 and my Ph.D. in 1970. Dave Thomas was my adviser for my masters thesis. The topic concerned stimulus control using pigeons as subjects. Although I continued to do research using pigeons for several years after Dave left the department, Marty Baron was my advisor, I am happy to say that I have not come close to a “laboratory pigeon” since then. One of my memories of that time was that we use to rent the pigeons from a local person whose name was, I believe, something like Zalewski. When we were done with the pigeons we would return the ones that survived to Mr. Zalewski.

My dissertation research was done under the direction of Rick “Bip” Vardaris. That research involved implanting electrodes into rats brains. The Kent State shootings took place while I was in the middle of my data collection, and since we were not allowed back on campus until that summer, I could not use the same animals and pretty much had to start over. I continued to conduct basic neuroscience research using rats as subjects (I have a hard time thinking of them as participants) for about 16 more years. I then switched gears and started doing human cognitive neuropsychology and psychophysiology. Since the middle 1990’s I have been doing “adaptive automation” research which involves using EEG determinants of task “engagement” . Adaptive automation basically involves changing the nature of a task, based on an EEG index, to maintain efficient performance. This research has been supported by NASA grants for the last 12 years.

Over the years I have been an author on approximately 60 articles in professional journals and approximately 60 conference presentations. I have also been PI or Co-PI on approximately \$1 million worth of grants and contracts. And I’m tired of it all!! My plan is to retire in 2-3 years. I am currently working on plans for activities post-academia. I run 15-20 miles each week, go to the fitness center another 10 or so hours each week, ride my bike and kayak. So exercise will be an important part of my retirement until I fall over and can’t get up. I do like to read, so I guess I will have a book with me when I’m lying there.

#### **Memories:**

I have lots of fond memories of my times at Kent State, mostly involving the people, faculty and student cohorts. I remember the softball games. Our team was called the “Peckers”. Those pigeons had way too much influence in the Psych. Department. One faculty-student game stands out – Bob Treichler speeding to home plate, knocking Tony, I can’t remember his last name, over and dislocating Tony’s wrist. In another game Xenia Coulter’s husband, who was a concert pianist, broke a finger and couldn’t play for several months. We took the game very seriously. And the athletic skill of Roy Lilly; he could really hit the ball a mile. So sorry to see him go.

I remember the wooden animal cages in the basement labs that were cleaned once a year, whether they needed it or not. No IRBs back then. I remember the Xmas caroling (the year I was in charge it was Chanukah chanting) when we would drive to each faculty’s house and get served a different alcoholic beverage at each one. Wes Zaynor would record our singing then play it back to us the next year.

## Ph.D. Alumni

### **Paula Hartman-Stein**

Dr. Paula Hartman-Stein is founder of the Center for Healthy Aging, a behavioral healthcare private practice in Kent Ohio, specializing in the care of older adults and their family members. She is also the Director of Geriatric Psychology and coordinator of the geropsychology post-doctoral fellowship at Summa Health System and a consultant to Coleman Professional Services, a mental health center. She has published on topics such as the use of caregiver report in diagnosing dementia, medical decision-making capacity, and behavioral determinants of healthy aging. She and her former mentor, Dr. Jeanette Reuter, have developed the Behavioral Competence Inventory©, a measure of functional ability in older adults. Her current research interest is developing cognitive fitness programs. For the past 7 years Dr. Hartman-Stein has written regularly for the newspaper, *The National Psychologist*, on issues regarding Medicare compliance and geropsychology practice. She has an edited book, *Innovative Behavioral Healthcare for Older Adults: A Guidebook for Changing Times* (1998).



In 2001 Dr. Hartman-Stein was elected Distinguished Practitioner in the National Academy of Practice In Psychology. She is a Fellow in APA's Division 12, Clinical Psychology.

Following receipt of her master's degree from West Virginia University and doctorate in clinical psychology from Kent State University in 1982, Dr. Hartman-Stein earned the Interdisciplinary Geriatric Clinician Development Award through the Western Reserve Geriatric Education Center, Case Western Reserve University.

Her current academic affiliations include: Clinical Assistant Professor of Psychology at the Northeastern Ohio Universities College of Medicine, Senior Fellow at the University of Akron Institute for Life Span Development and Gerontology, and adjunct instructor at Kent State University's College of Nursing.

Active in political advocacy, Dr. Hartman-Stein is immediate past President of the Division of Clinical Geropsychology of the American Psychological Association. Paula is married to Rob Stein and has a 16 year old son, Eric.

Ph.D. Alumni

**Gary Hawk – In Memoriam**

One of my closest associates during my graduate training at Kent, on internship at the Cleveland VA Medical Center, and during my early post-doctoral years, was the late Gary Hawk. Gary touched many people's lives. I remember him most for his empathy for the clients he saw, his incredible insight, his satirical comments about the peculiarities of some of the organizations where we both worked, and our shared interest in forensic psychology. Gary left Ohio for the Center for Forensic Psychiatry Ann Arbor, Michigan and went on to the University of Virginia Center for Law, Psychiatry and Public Policy, where he was an associate professor at the time of his death.

- Kathleen Powers Stafford



## Ph.D. Alumni

### **Sue Hetrick**

Following graduation from KSU in 1969, I accepted a position as counseling specialist at the Counseling and Group Resources Center on the KSU campus. I worked there from 1969 until summer of 1971, when I went to work with the Mental Health Board of Portage County. I was Executive Director of the Mental Health and Recovery Board for over 31 years, retiring from that position in 2003. During my time with the Board, I was active in the state association of county boards, serving as president and as a member of the executive committee. I also joined the Association of Behavioral Healthcare Management, receiving certification in behavioral healthcare management. For several years I was a Regional Governor of that organization and served on the national board.



In addition to my work in mental health administration, I joined a group private practice. I am still involved with Western Reserve Psychological Associates in Stow, Ohio. I see a variety of clients, including children, adolescents, and adults. I also do some clinical consulting and records reviews for the local mental health board.

My husband and I have two grown sons and I recently became a grandmother this January. Now that we have more leisure time, we like to escape the Ohio cold weather by going to the beach in Florida.

#### **Memories:**

Although it has been a long time since my days as a student, I have fond memories of our favorite tension relievers:

- (1) fun parties at faculty homes and grad student hovels;
- (2) skits we did for the faculty, poking fun at our favorite people;
- (3) the firecracker pranks....they made a lot of noise in file cabinet drawers;
- (4) trips to EPA and MPA...sort of like going to camp and never getting any sleep.

Ph.D. Alumni

**Norman Jentner**

Focused on psychotherapy research, and post-candidacy exams, on conflict resolution from a systems psychological perspective. After 11 years of private practice as a “clinical and community psychologist,” lured into full-time employment as director of domestic violence intervention program (safer Solutions, in Portage County), only to lose job a year later in dramatic cost-cutting move by struggling non-for-profit employer.

Currently employee as the public health psychologist at the Akron Health Department, serving as both Clinical Director of the Counseling and Alcoholism Services Division and as an internal EAP counselor and consultant to the City of Akron municipality. Part-time private practice as systems consultant.

Currently living in the question: How can we co-create healthy human systems that are conducive to healthy human development (broadly defined)?

**Memories:**

One favorite Psychology Department memory: Basketball with ‘Coach Lilly!’

## Ph.D. Alumni

### **Robert K. Klepac**

I received my BSS from John Carroll University, and my Ph.D. in clinical psychology from Kent State in 1969. I have served on the faculties of Western Washington University; North Dakota State University, where I chaired the Department of Psychology; and Florida State University, where I served as Director of Clinical Training.



My current position is Director of Psychology Training at Wilford Hall Medical Center, directing a large internship program and overseeing a postdoctoral program in health psychology. I am National Coordinator of Air Force Psychology Training, and have been Research Professor at the University of Texas Health Sciences Center – San Antonio. My research interests lie in clinical health, and include studies of pain and the reduction of fear of intrusive medical and dental procedures. I have enjoyed NIH support for that work.

Service to professional associations includes: chair, APPIC board of directors; member, APA Committee on Accreditation; president, Society for a Science of Clinical Psychology; president, Behavioral Psychology Specialty Council; representative, Council of Specialties in Psychology; ABCT/AABT Education and Training Committee and Program Committee. I am currently a candidate for election to the ABCT Board of Directors. I've been a delegate, member of the planning committee, and/or speaker at 12 national conferences on education, training, and credentialing in psychology.

I've served APA Division 12 (Clinical) as a member of the Publications Committee and the Editor Search Committee, and am currently Treasurer and a member of the Board of Directors Executive Committee.

My internship program at Wilford Hall received the Outstanding Training Program Award from AABT. I've received an award from APPIC for "distinguished contributions to internship training in psychology", and in April of this year, I received the Nicholas DiCaprio Award for Distinguished Alumni in Psychology from John Carroll University. I am a Fellow of the American Psychological Society.

Ph.D. Alumni

**Robert Kornhaber**

While completing my internship at Norwich Hospital in Connecticut and before obtaining my degree in June, 1973, I became interested in Dr. Albert Ellis's Rational Emotive Therapy. As a result I applied to his institute in New York City and in September, 1973 I started a post-doctoral fellowship program that I completed in 1975. From 1975 to 1977 I continued working at the institute as a staff psychologist. Needless to say, the four years there provided me with excellent training in cognitive behavior therapy. At that time Dr. Ellis was still considered somewhat radical, particularly among the predominately psychoanalytically oriented therapists who made up most of the mental health community in the New York City area. In addition to my involvement with Dr. Ellis's institute, I also taught at William Paterson College in New Jersey from 1973 to 1976.

Starting in 1975 I began a private practice in Fort Lee, New Jersey. Although my caseload included the typical variety of mental health issues, in 1977 I also began specializing in the treatment of agoraphobia and other phobic conditions. At that time there was little understanding of agoraphobia in the mental health community and few therapists provided appropriate treatment. In addition to cognitive behavior therapy at my office, I also began taking patient's into feared settings to help desensitize them. And when dealing with homebound patients, I would start treating them from their homes. By the late 1970's I had a full time practice and had opened a second office in Millburn, New Jersey. I have continued in private practice since then

On a more personal note I have been married since 1978 and have two adult children. My wife and I live in River Edge, New Jersey, a few miles from New York City. If any of my former classmates would like to reach me, please feel free to call me at either of my office locations in Fort Lee and Millburn, New Jersey.

## Ph.D. Alumni

### **Kenneth Leonard**

I am currently a Senior Research Scientist at the Research Institute on Addictions and the Director of the Division of Psychology in Psychiatry at the University at Buffalo Medical School. My wife, Angie, our three children, Ben (20), Katie (16), and Allison (12) and I live just outside of Buffalo, with a cat, a rabbit, and a dog. We have been here in Buffalo for almost 20 years. I graduated from Kent State in 1981, and completed postdoctoral training in psychiatric/alcohol epidemiology at the Western Psychiatric Institute and Clinic at the University of Pittsburgh. My research has centered on the interpersonal and familial influences on substance abuse, as well as the influence of substance abuse on interpersonal and family processes. Much of my research has addressed substance abuse and family violence, but I have also been concerned with the impact of alcoholism on child development and the role of marital/family processes in the prevention and treatment of substance abuse. For a time, I was an Associate Editor for the Journal of Abnormal Psychology. Currently, I am on the editorial board of the Journal of Studies on Alcohol, a consulting editor for the Journal of Abnormal Psychology and for Psychological Bulletin, and a member of the board of directors for Alcoholism: Clinical and Experimental Research. I am also a Fellow in Divisions 50 (Addictions) and 28 (Psychopharmacology and Substance Abuse) in the American Psychological Association, and former President of Division 50.

#### **Memories:**

I have many fond memories of Kent State, having gone there for undergraduate and graduate studies. The dedication of the Lilly Seminar Room brings to mind several memories involving Dr. Lilly. Roy was the first faculty member that I met at orientation as a college freshman in 1972. He completely shattered my stereotypes about psychologists, he was affable and witty, sometimes a bit goofy. In graduate school, I remember playing basketball with Coach, Rich Hirschman, and the other members of the department against the English department (I like to think that we won all the time). I wasn't very good, but that didn't seem to bother Roy. Not that he was uniformly warm and supportive, but rather, he was humorously critical, and could gauge how much teasing an uncoordinated graduate student could take. Roy was also on my dissertation committee, and after I had defended it, he confessed that he was surprised that I had gotten any significant findings at all. In 2001, when I was President of Division 50, Roy came to hear my address at APA. I was thrilled that he had made it a point to come to my talk. I am pleased that a Seminar room is being dedicated to Roy, and hope that his spirit and philosophy will live on in the Psychology Department.

Ph.D. Alumni

**Barry Lubetkin**

Barry S. Lubetkin, Ph.D., is a Clinical Psychologist and founder/director of The Institute for Behavior Therapy in New York City. He is internationally known for his expertise in the areas of anxiety and worry management. In addition to treating hundreds of patients each year in his practice, Dr. Lubetkin has written two widely acclaimed self help books: *Bailing Out- The Healthy Way to Get Out of a Bad Relationship and Survive*, and *Why Do I Need You To Love Me In Order to Like Myself*. Dr. Lubetkin is board-certified in both Clinical and Behavioral Psychology from the American Board of Professional Psychology, and served as President of the American Board of Behavioral Psychology for twelve years. Dr. Lubetkin has made numerous appearances as a guest expert on national talk shows, including *Oprah*, *The Sally Show*, and *Montel Williams*.



Ph.D. Alumni

**John M. Marazita**

John M. Marazita (Ph.D., 1994, experimental psychology: cognitive development). John is currently an associate professor of psychology at Ohio Dominican University. He has been at ODU since 1995 following a visiting professorship at Muskingum College. At ODU, John teaches courses in the areas of human development and cognitive psychology and serves as director of the freshman seminar and advisor to the psychology clubs. John continues to be interested in metacognitive contributions to language development and theory of mind. He is currently working on a study of the relationships among auditory processing skills in music and language in typically developing and language delayed children.



John resides in Columbus with his wife Laurel and daughters Annie (3-years-old) and Carrie (2-years-olds).

## Ph.D. Alumni

### **Diane Moran**

After **many** long years I completed the Ph.D. program. I have been working in a large group private practice located in Cuyahoga Falls since 1991. The practice is owned by another former grad, Pam Michelson, and our staff has kept us connected to Kent's program over the years. I also serve as President of the Board for the Michelson Women's Resource Center at Summa Health System. Pam is something akin to semi-retired, so Lori Wills and I do much of the day-to-day running of the practice. It is wonderful to find myself still sharing space and life with my old grad school officemate after all of these years. I no longer sleep at my desk like I used to in our grad office, but not because I wouldn't like to! Lori and I were talking recently about having been friends for over 20 years now, both starting the program in the fall of '84. We're sure that we haven't aged a bit, although oddly clients never complain about us being too young anymore!



I live in Akron with my partner of ten years. She is a professor of sociology at the University of Akron. Despite our ongoing tongue-in-cheek clash about the relative superiority of our respective disciplines we manage to enjoy a pretty pleasant life together. In fact, I even do research with one of her colleagues. Our two dogs and two cats are kind enough to let us share the house with them. Kathy has a 19-year-old son who graduated high school last year and started at Kenyon College in the fall. In my spare time, which somehow seems to dwindle every year,—it's pretty bad when grad school gets remembered as a time of freedom—I enjoy numerous activities including going to film festivals, singing with a women's chorus, bike riding, making jewelry, and traveling with friends. I still fantasize about being an architect.

Ph.D. Alumni

**Thomas D. Parker**

I started at KSU in 1965 as a Bob Treichler student, MA 67 PhD 1970. My Psych career was short as I taught at Loyola U in Chicago for 5 years (69-74) at which point my family and I "dropped out". I farmed and built custom furniture in northern Wisconsin until 1987 when my French teacher wife decided to go to grad school. While she studied I worked in Neurophysiology research at the U of Wisconsin, Waisman Center. She is now a full professor of French at the University of Wisconsin-Stevens Point and I am the executive director of the Portage County Literacy Council...Wisconsin that is. (I occasionally get accidental volunteers from Portage County Ohio)

Ph.D. Alumni

**William F. Prokasy**

Educational Background

M.A. Kent State University, 1954, Clinical Psychology  
Ph.D. University of Wisconsin, 1957,  
Experimental Psychology and Statistics

Academic Positions

University of Georgia  
Professor of Psychology, 1988-1998  
Vice President for Academic Affairs 1988-1998  
Emeritus Vice President and  
Professor of Psychology 1998—

University of Illinois, Champaign-Urbana  
Professor of Psychology, 1980-1988  
Dean, College of Liberal Arts and Sciences, 1980-1988  
Emeritus Professor and Dean, 1988-

University of Utah  
Professor of Psychology, 1966-1980  
Acting Dean, Graduate School of Social Work, 1979-1980  
Dean, College of Social and Behavioral Science, 1970-1979  
Dean, Division of Social and Behavioral Science, 1968-1970  
Chair, Department of Psychology, University of Utah, 1966-1969

Pennsylvania State University  
Associate Professor of Psychology, 1963-1966  
Assistant Professor of Psychology, 1957-1963



## Ph.D. Alumni

### **J. LeBron Rankins**

J. LeBron Rankins, Ph.D., entered the Psyc Dept in the Fall of 1992 as a Clinical student. LeBron is currently employed as a staff psychologist at Ithaca College, in Ithaca, NY, where he primarily provides clinical services for students. During breaks in the academic year, LeBron is likely to be seen packing his car for yet another adventure. This reunion is his second stop in a seven week itinerary of “planes, trains and automobiles” that will eventually take him from southern California to Seattle. The following is a quote that motivated his persistence while completing his graduate work: “I do not think there is any other quality so essential to success of any kind as the quality of perseverance. It overcomes almost everything, even nature.” *J.D. Rockefeller.*



#### **Memories:**

The most unique memory of my time at Kent was the occasion in which Heidi asked me to assist her with a rat experiment. My task was simply to hold the rat, dip its long tail into a beaker of warm water and continue holding it while Heidi inserted a sheath covered needle into its tail. Needless to say, I never considered becoming a “rat boy”. Then there was 2.50 Loft pizza, Susan's coffee and the early morning call from intoxicated roommates/classmates wanting a ride home from the Loft (yes, I did go pick them up). The Dept helped me achieve an important goal in my life and in the process of learning, I learned from my peers that I also had something to teach; that is my most significant memory of my time at Kent.

#### **The Incoming Class of 1992:**



## Ph.D. Alumni

### **Alexander Rich**

In 1975 I took a position as an associate professor of psychology at Indiana University of Pennsylvania. It was to be a one-year appointment while I finished my dissertation and gained some teaching experience. I ended up staying at IUP for 22 years. IUP had great appeal because it was a new psychology department in the process of developing courses and curriculum. As a result, I had the opportunity, along with my colleagues, to develop a doctor of psychology (PsyD) program, my own psychological clinic, and to pursue interests in behavioral medicine. I also became licensed to practice psychology in Pennsylvania, and I practiced part time for 20 years.



In 1992 I developed a blood cancer called multiple myeloma. I was fortunate to be part of a clinical trial on the efficacy of stem cell transplantation in the treatment of this disease. The life expectancy of myeloma patients has increased from 3 to 7 ½ years; I have been healthy and alive for 13 years. However, I found that I could no longer work 10-12 hours a day required by my responsibilities, and I retired as an emeritus professor of psychology in 1997. Since then, my wife I developed our own company (Rich and Rich Consultants) in Tampa, Florida and Devon, Pennsylvania. I specialize in research consultation and writing. I have had an association with the University of South Florida since 1997.

My wife is the Chief Nursing Officer at the Hospital of the University of Pennsylvania and an associate dean with the University of Pennsylvania School of Nursing. Together we have raised 5 children, and have 9 ¾ grandchildren and counting. I spend my time working, commuting, golfing, visiting foreign countries, and resuming my education in life by studying Shakespeare, the opera, Buddhism, and the like.

## Ph.D. Alumni

### **Jennifer L. Sanftner**

I am currently in my fourth year of a tenure track position as Assistant Professor in the Psychology Department at Slippery Rock University. SRU is a mid-sized university, emphasizing undergraduate education. I teach Health Psychology, Psychology of Gender, Abnormal Behavior, and Introduction to Clinical Psychology. I also co-supervise the Psychology Internship program, within which we supervise between 40 and 50 undergraduates completing internships each year. I serve as faculty advisor to a very active chapter of about 30 Psi Chi members.



After graduating from KSU in 1999, I completed a 2-year post-doctoral fellowship at the University of Rochester Medical Center in Rochester, New York. My work there included working with the Eating Disorders Treatment Service, seeing outpatients for psychotherapy in two general adult outpatient clinics, running psychotherapy groups, and completing evaluations for local courts. This varied experience in combination with the broad education I received from KSU prepared me well for my role as an undergraduate professor.

I continue to maintain an active research program, which has evolved from my work with Dr. Jan Crowther at KSU. Drawing on the work Jan and I did on moods surrounding binge and purge episodes in women with bulimia, I have incorporated looking at relational connections and disconnections in the development and maintenance of eating disorders. My current research seeks to identify how aspects of mutuality relate to mood changes and fluctuations surrounding eating disorder behaviors. I continue to collaborate with Dr. Mary Tantillo in Rochester, New York. I have also done some related collaborative projects with other faculty in the areas of body images in men and women.

A new area of interest is health psychology. Having been introduced to the field in graduate school, I have developed an increasing interest in alternative medicine and the psychological factors in preventing and overcoming illness, particularly those involving the stress-illness link. I am planning future research in this direction.

In my free time, I enjoy spending time with my significant other, Dr. Ken Vinton, a Chiropractor, and his 12 year-old daughter, Lauren. My hobbies include watching movies, reading, and hanging out with friends.

Ph.D. Alumni

**Judith Scheman**

I started my dissertation with Dr. John Graham the year after my mother was diagnosed with, and treated for, Stage 4 Ovarian Cancer. I defended my dissertation a year later, and 2 months after a second trimester miscarriage and the month that my father died of non-Hodgkin's lymphoma. I went through graduation that May, a week before my mother-in-law died, after spending a year in the CCF ICU, following treatment for esophageal cancer. During that time I attribute my "sanity" and perseverance to the structure imposed on me by Dr. Graham and his encouragement to keep going forward. I could not have done it without him. (And my husband.)



Since leaving graduate school I have worked primarily as a health psychologist in acute care and rehabilitation hospitals. I worked for a few years in a private practice after my daughter was born and I realized (*at the time of her birth*) that I did not want to return to work, as I had planned, because I just wanted to be with her. I never did more than 12 hours of therapy a week, and then mostly in the evenings when my husband was home with our daughter. For the past 10 years I have been a pain specialist at the Cleveland Clinic Foundation. I love my job and the exceptional professionals that I work with daily.

Most importantly, though is the fact that I am still married to the same wonderful man I met and married while at KSU and we have a great 15 year-old daughter. I am thankful daily for them both.

Ph.D. Alumni

**Steve Schwartz**

In preparation for the upcoming KSU reunion, I am writing to update you on my career since I graduated in 1987. For the past 21 years, I have worked for the Cuyahoga County Board of MR/DD, serving as Chief Clinical Officer during most of this time. I will be retiring from this position on August 1, and will then take a new position as the Associate Director of Jewish Family Services Association/Ascentia in Cleveland. During this time, I have published (with others) six articles and/or book chapters, most of which relate to mental health problems in persons with mental retardation and developmental disabilities. I have delivered and/or collaborated in the delivery of scores of presentations at local, state, and national conferences. I am an adjunct faculty member at Notre Dame College and Kent State University, and a Senior Clinical Instructor at the Case Western Reserve University School of Medicine. I have also engaged in the private practice of psychology periodically.



I have been married to Patricia for 23 years and have a stepdaughter who is now an adult. I do not have any particular anecdotes about my time at Kent State, but I do recall it as a very satisfying time. I appreciated the very dedicated and competent faculty and the good camaraderie among my classmates. What I learned at Kent established the foundation for a fulfilling and successful career.

## Ph.D. Alumni

### **Kathleen Powers Stafford**

Kathleen Powers Stafford earned the Ph.D. in Clinical Psychology from Kent State University in 1977, after transferring from the doctoral program in Clinical Psychology at West Virginia University, where she earned the M.A. She completed the clinical internship at the Cleveland Veterans Administration Medical Center. She was awarded the Diplomate in Forensic Psychology from the American Board of Professional Psychology in 1990.

Dr. Stafford directs Psycho-Diagnostic Clinic, a five-county court clinic in Northeastern Ohio, where she supervises doctoral students from the Kent clinical training program on placement. Dr. Stafford also serves on the dissertation committees of Kent doctoral students who conduct assessment research, often with the Psycho-Diagnostic Clinic database developed through the efforts of Dr. Yossef Ben-Porath at Kent. She also maintains a private practice in clinical and forensic psychology. In addition to her adjunct faculty appointment to the Department of Psychology at Kent State, she is a Clinical Assistant Professor of Psychology at the Northeastern Ohio Universities College of Medicine and directs the forensic rotation for psychiatry residents.

Dr. Stafford is past President of the American Board of Forensic Psychology and past Chair of the American Psychological Association Ethics Committee. Her teaching and publications focus on psychological assessment, forensic psychology, treatment of high-risk clients, and professional standards and ethical issues in the practice of clinical and forensic psychology.

## Ph.D. Alumni

### **Lyn Stein**

Lyn Stein received her PhD from Kent State University in 1998. She's been faculty at Brown University for the past several years and does research in substance abuse. She has several grants funded through NIH and continues to publish with Jack Graham. Her research interests include assessment and treatment of persons involved in the legal system, with most of her current work focusing on adolescents. She also is Director of Research at the Rhode Island Training School and is founder and Director of the Juvenile Forensic Psychology Post-Doctoral Training Program at Brown University. She has a particular interest in translating research findings to applied service settings.



#### **Memories:**

- Spending time with Chris (aka “Meister”)
- Creating a comic strip of select faculty and students with Chandra (all in good fun!)
- Parties at Paula and Brad’s place in Ravenna.
- Wearing Denise’s girly clothes, and using her hair-styling equipment and make-up at Halloween.
- MMPI conferences with Jack and Yossi.
- Jonathan and Rick getting a little crazy at the MMPI conferences.
- Bobby, Alex, and Earl.
- Playing soccer with faculty and other folks associated with the department in a community league.
- Seeing Jack and Mary Ann when visiting in OH.
- Many more good many memories with many more good folks – the list is too long to create in full.

Ph.D. Alumni

**James W. Stoops**

Following graduation in 1975, I worked for three years with Akron Child Guidance Centers, where I had served my first internship in 1972-1973. In 1978 I joined a private practice in Portage County, Ohio, Portage Psychological Associates, and worked with them as a child and adolescent psychologist from 1978-1997, when managed care dictated that many of our primary insurance clients be served elsewhere! I then returned to the Akron area in 1997 and took a position with Child Guidance and Family Solutions as a staff psychologist and outpatient therapist. My current areas of specialization include a county-wide treatment program for adolescent sexual offenders, in conjunction with Summit County Juvenile Court, and programs for ADHD, Mood and Anxiety Disorders, and Disruptive Behavior Disorders in children and adolescents.

Ph.D. Alumni

**Rodney Timbrook**

I'm currently in private practice in Fort Wayne, Indiana with fellow alumna, Susan Dwyer, Ph.D. (she is sending her RSVP as well).

I'm the Newsletter Editor for the Indiana Psychological Association Newsletter and have been working hard on defeating State legislation that would give Social Workers, Mental Health Counselors, and Marriage and Family Therapists the privilege to use psychological tests and independently diagnose mental disorders.



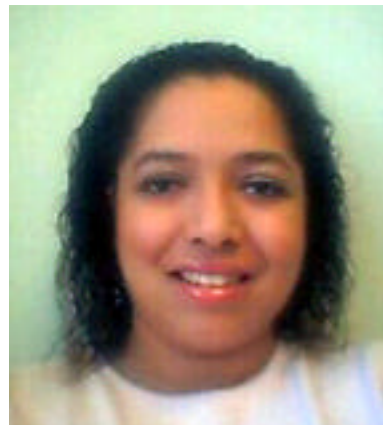
**Favorite memories:**

- 1) Scoring Dr. Graham's MMPI-2 and being disappointed that it was so "normal."
- 2) Handing in my Inferential Statistics exam to Dr. Lilly 20-minutes before the time was up, much to his surprise.
- 3) Passing comps!
- 4) Being hooded at graduation!

## Undergraduate Alumni

### **Amanda Flowers**

Throughout her life, Amanda Flowers has had a passion for learning, leadership and helping others. From elementary through high school, Amanda participated in several community services (e.g., providing gifts and cooking for poor families, Special Olympics, and Walk-America) and extracurricular activities (e.g., Girl Scouts, Student Council, band, choir, journal clubs, Spanish Club, and yearbook and school news committees). In third grade, Amanda spoke on a live television broadcast for the Easter Seals. Amanda also spoke on the local news about a license plate that her eleventh grade Government class designed and submitted to the Ohio Bureau of Motor Vehicles. Amanda was the Salutatorian of her eighth grade class and graduated in the top ten percent of her high school class. She began her career at Kent State University in



August 1997, as a first generation college student from an African American family. As Amanda majored in Psychology, minored in Sociology, and worked on campus at the Undergraduate Studies Office and the Student Advising Center, she continued to hold both leadership (e.g., Student Orientation Instructor, Student Ambassador, member of Pi Gamma Mu National Honor Society, and Vice President of the Mortar Board National Honor Society) and mentorship positions (e.g., University Mentoring Program, KSU Exploration Day, and KSU Kupita/Transciones Program). Amanda received several university and national awards at KSU. In May 2001, she graduated Cum Laude, receiving a Bachelor of Arts Degree in Psychology at KSU and in December 2003 she received a Master of Arts degree in Psychology at the University of Cincinnati (UC). Amanda is currently enrolled in a Clinical Psychology Doctoral program at UC, and will receive her Ph.D. in 2006. As a graduate student, Amanda has received a variety of clinical and research experiences, mentored other students, presented at professional conferences, and submitted articles for journal publication.

## Undergraduate Alumni

### **Ingeborg Hrabowy**

Dr. Ingeborg Hrabowy, a practicing clinical and business psychologist, has successfully served over 3,500 clients. She works with individuals, couples, families, families-in-business, entrepreneurs, business owners and executives to increase their financial, emotional, mental and/or relationship capabilities. The word often used to describe Dr. Hrabowy is “moxie”...whether in her private practice or executive coaching, clients learn quickly, advance their skill levels, and walk away feeling more productive and empowered.

Dr. Hrabowy received BA degrees in Psychology and English from Kent State University, where she graduated summa cum laude and Phi Beta Kappa, and was also a graduate of the Honors College. She holds a Master’s and Doctoral degree in Clinical Psychology from Bowling Green State University, and completed her Clinical Internship at the University of Connecticut School of Medicine. She is Past President of the Cleveland Psychological Association (2001), has been a Goodwill Ambassador to Brazil through Rotary International, completed a half marathon (2003) to raise funds for the Leukemia and Lymphoma Society, and traveled to the jungles of Mexico to help build a medical clinic which now serves 30,000 Mayan Indians

