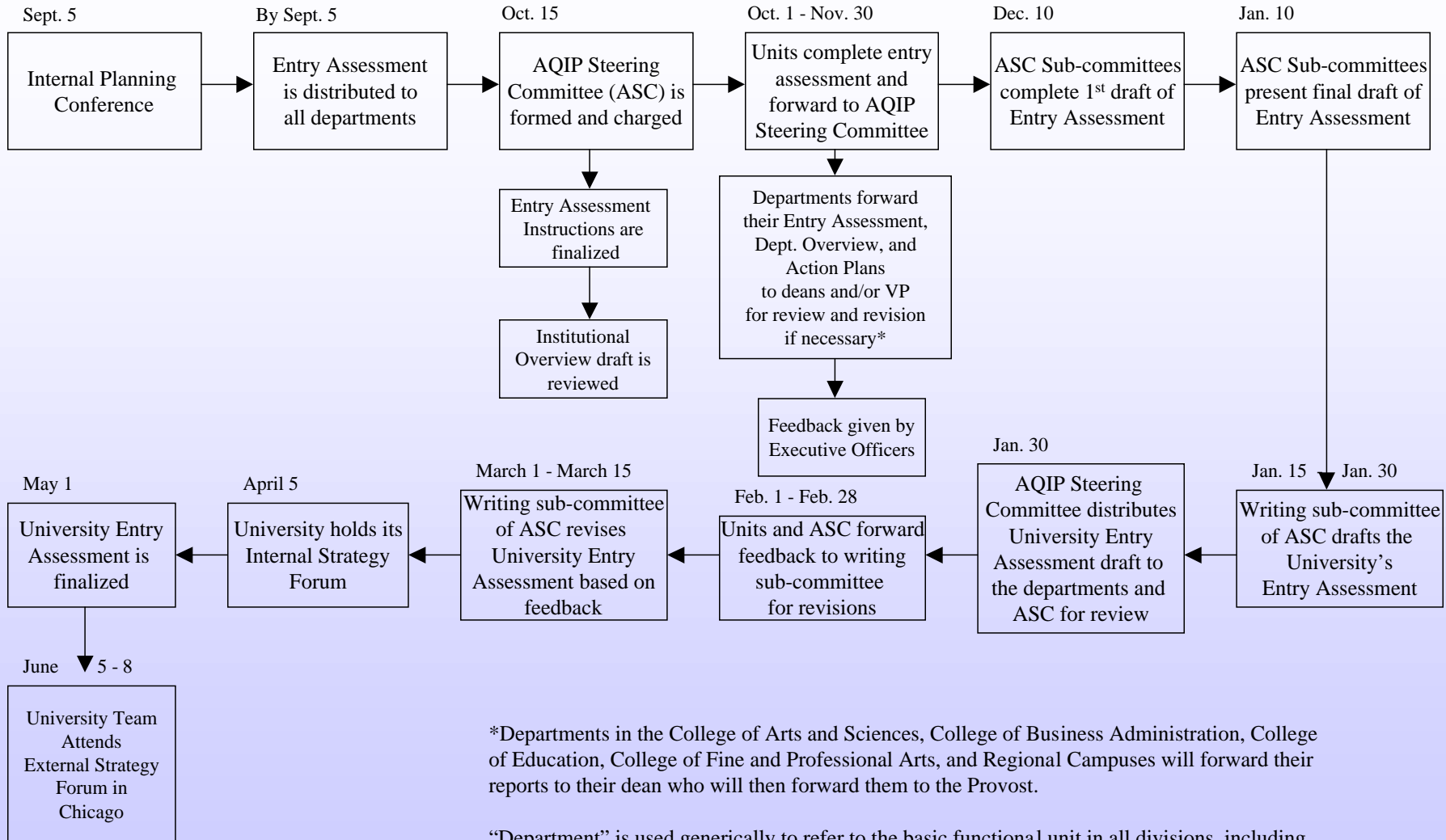


AQIP Entry Assessment Implementation Plan

Revised – January 3, 2002



*Departments in the College of Arts and Sciences, College of Business Administration, College of Education, College of Fine and Professional Arts, and Regional Campuses will forward their reports to their dean who will then forward them to the Provost.

“Department” is used generically to refer to the basic functional unit in all divisions, including departments, schools, colleges, campuses, major offices, areas, etc.